

For Foreigners living in Japan

# JP-MIRAI Portal



Number of Registrants  
(on Sep. 2024)

# 3,200



## Consultation desk [JP-MIRAI Assist]

Available in 22 languages

How to contact : Chat on the APP/Email/Tel (0800-123-5717)

Available time : Tue-Sat 10:00-18:00

Correct and useful information for living and working in Japan

Find events, classes, friends(foreigner/Japanese) near you [JP-MIRAI Friends]

Download



## JP-MIRAI

### Japan Platform for Migrant Workers towards Responsible and Inclusive Society

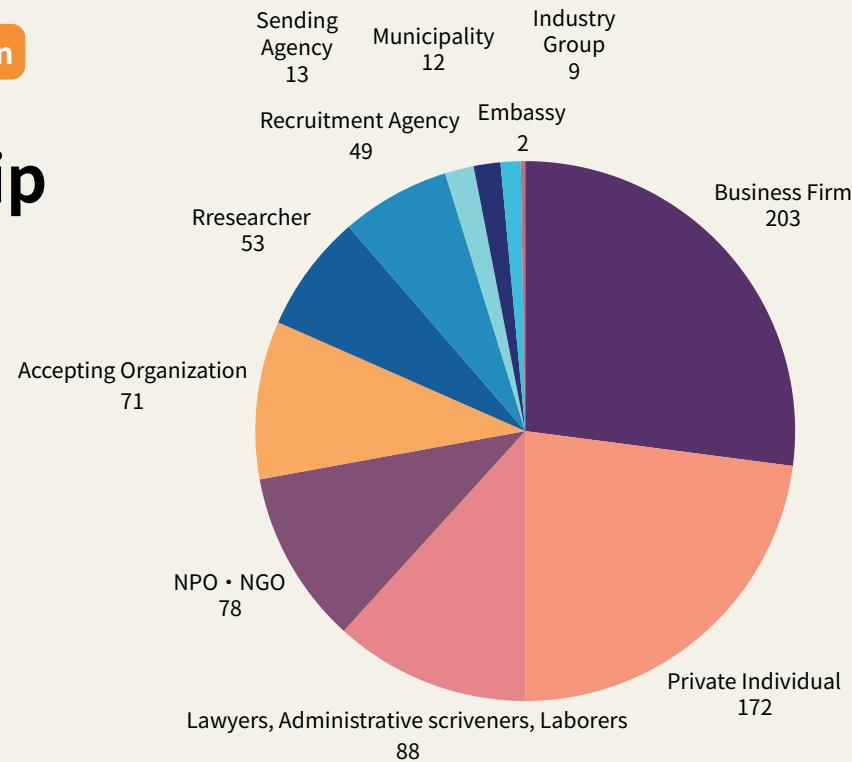
For Officials (mainly Japanese) who involve in sending and receiving foreign workers

## JP-MIRAI Membership

We are working to improve the working and living environment for foreign workers through learning from and collaborating with those involved in sending and receiving foreign workers.

Number of Memberships (on Sep. 2024)

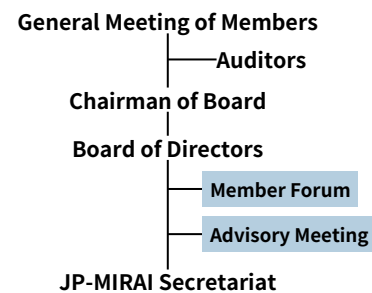
# 750

 Organization/Personal

## How we started

In November 2020, JP-MIRAI was established as a voluntary organization by various stakeholders such as private companies, local governments, NPOs, academics, and lawyers led by JICA. JP-MIRAI aims at attacking various issues of migrant workers in Japan seriously, being "A Country of Choice" for migrant workers. In June, 2023, "General Incorporated Association JP-MIRAI" was established to expand its activities.

### JP-MIRAI



The objective of the "Japan Platform for Migrant Workers towards Responsible and Inclusive Society (JP-MIRAI)" is to promote inclusive economic growth and sustainable development of the society. By cooperating with stakeholders to protect the rights of migrant workers and improve their working and living conditions, we aim to accept migrant workers responsibly, making Japan a country of choice.

## JP-MIRAI

Japan Platform for Migrant Workerstowards Responsible and Inclusive Society

〒162-0845 JICA Ichigaya Building, 10-5, IchigayaHonmura-cho, Shinjuku-ku, Tokyo  
Tel: 050-6883-5531

Website



Issued on Sep. 2024

# Information service for Migrant Workers

## JP-MIRAI Portal Information service for Migrant Workers

Useful articles on living and working in Japan

JP-MIRAI Friends Bulletin board for the communication between foreigners and Japanese

JP-MIRAI Assist

### Consultation Desk

- Available in 22 languages
- How to contact : Chat on the APP/Email/Tel (0800-123-5717)
- For complex consultations, we provide support through companion support, expert consultation, and connection to ADR (Alternative Dispute Resolution) procedures.
- Also available for supporters of foreign workers



By providing correct information to foreign workers, we will improve the environment for acceptance.



## JP-MIRAI Supporter

### Connecting to ethnic community

We will commission supporters to foreigners and Japanese who have connections with the ethnic community, and will disseminate information in two-way cooperation.



Community page for Supporters



Opinions exchange with foreign workers

# Mutual Learning and Public communication

## JP-MIRAI Field Academy

### Study tour in Sending Countries (for membership)

We conduct study tours in sending countries to promote understanding of the current situation and challenges in the process of recruiting young people to Japan. The program includes visits to sending institutions, opinion exchanges with students and trainees before/after their stay in Japan, and dialogues with relevant organizations.



Hearings at sending agencies, international organizations, etc.



Discussions with local officials on issues in sending and receiving human resources

### History & Schedule

- vol.1 (2023.7) Vietnam
- vol.2 (2023.11) Indonesia
- vol.3 (2024.6) Myanmar
- vol.4 (2024.11) Nepal

## Mutual learning

### Networking and sharing of best practices among members

- Member forums (about twice a year)
- Activity reports by members
- Web articles featuring good practices



### Various workshops/seminars

- Initiatives by local governments to secure and retain local talent
- Updates on the situation in each industry/country of origin
- Current topics such as legal amendments, etc.



## Research and policy proposals in collaboration with government agencies



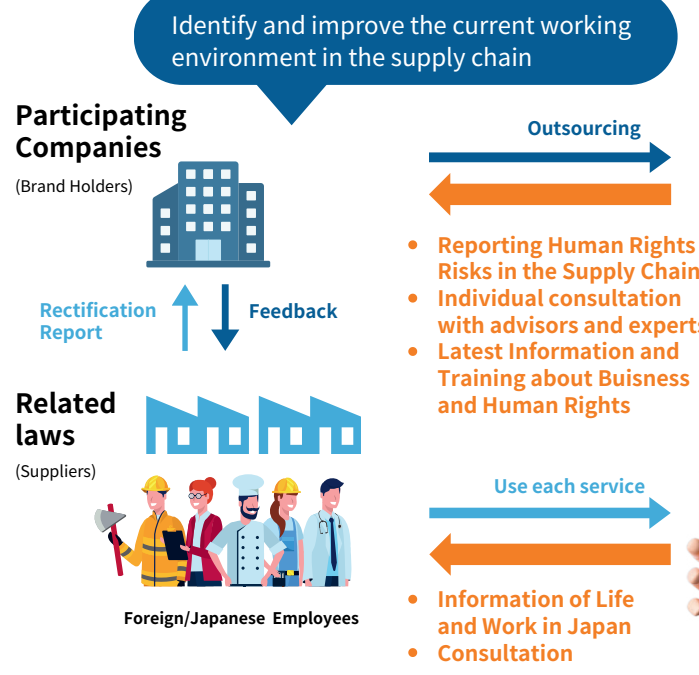
# Collaboration in business and human rights

## Supporting program for Supply chain management

We provide comprehensive support for companies' efforts in "Business and Human Rights" and in creating a safe and secure working and living environment for foreign workers in their supply chains.

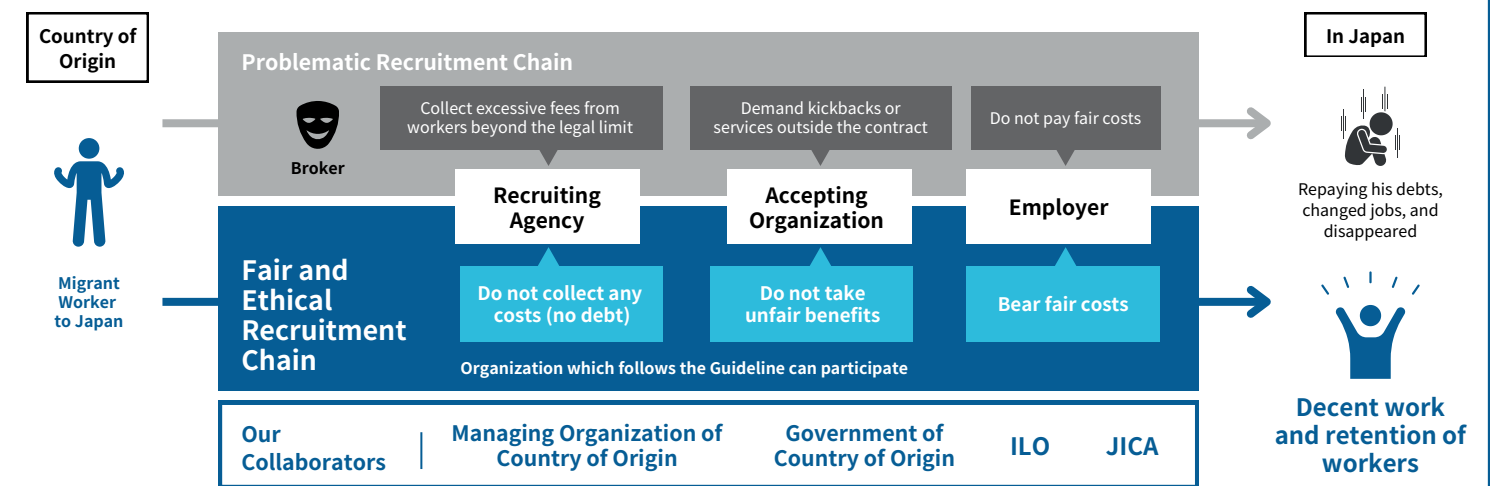
### Usage results (on Sep. 2024)

Number of participating companies	Number of related laws	Number of beneficiaries (foreign workers)
22	190	26,000



## FERI Fair and Ethical Recruitment Initiative

A framework by companies and organizations aiming to realize "International Standard Recruitment of migrant workers" without collecting recruitment and related fees from migrant workers.



**Schedule** 2024 Autumn Starts in Vietnam **VJ-FERI** Expanding Asian countries soon

## Training Materials for SMEs

To support SMEs which is difficult to devote sufficient manpower, budget, and time to efforts to protect human rights, we provide videos that explain important codes of conduct based on international norms in an easy-to-understand manner with specific examples. It is scheduled to be operational around January 2025.

## Supporting Overseas SCM

We support Japanese companies in managing their overseas supply chains in cooperation with international NGOs and UN agencies. We have cooperation agreements with Issara Institute, RBA, and IOM.