

# Mutual Learning and Dissemination

With Multi-stakeholders

## Mutual learning

### Networking and Sharing of Best Practices

- Member forums (about twice a year)
- Activity reports by members
- Web articles featuring good practices

### Various Workshop/Seminar

- Initiatives by local governments to secure and retain local talent
- Updates on the situation in each industry/country of origin
- Current topics such as legal amendments, etc.



## Research and Policy Proposals in Collaboration with Government Agencies

### Study tour in Sending Countries

## JP-MIRAI Field Academy

We conduct study tours in sending countries to promote understanding of the current situation and challenges in the recruiting process through our visits to governments, recruiting agencies, training centers, etc.

#### History

vol.1 (2023.7)	Vietnam
vol.2 (2023.11)	Indonesia
vol.3 (2024.6)	Myanmar
vol.4 (2024.11)	Nepal



JP-MIRAI

Japan Platform for Migrant Workers  
towards Responsible and Inclusive Society

## JP-MIRAI Membership

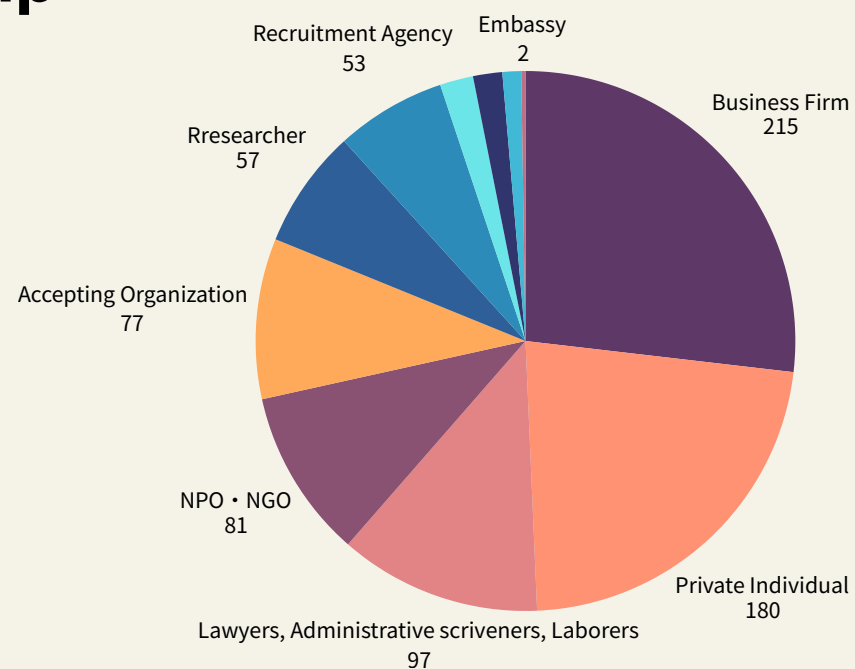
We are working to improve the working and living environment for migrant workers through learning from and collaborating with those involved in sending and receiving migrant workers.

### Number of Memberships

(As of this issue)

800

Organization/  
Personal



JP-MIRAI

Japan Platform for Migrant Workerstowards Responsible and Inclusive Society

〒162-0845 JICA Ichigaya Building, 10-5, IchigayaHonmura-cho, Shinjuku-ku, Tokyo  
Tel: 050-6883-5531

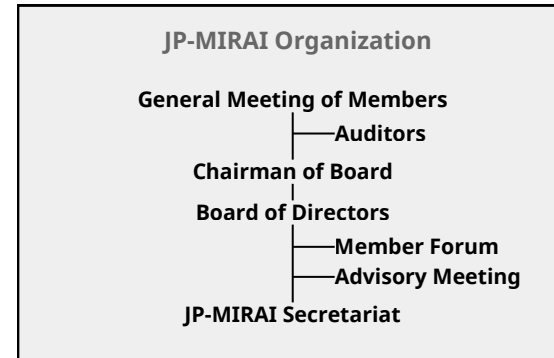
HP >



Issued on Feb. 2025

# What we do

The objective of JP-MIRAI (Japan Platform for Migrant Workers towards Responsible and Inclusive Society) is to promote inclusive economic growth and sustainable development of the society. By cooperating with stakeholders to protect the rights of migrant workers and improve their working and living conditions, we aim to accept migrant workers responsibly and make Japan a country which is chosen by migrant workers.



## Three Pillars of Activities

To protect the rights of migrant workers and improve their living and working environment, we are working on three important initiatives.



## Information Sharing and Collaboration with Migrant Workers

Comprehensive Website/App for Foreigners

### JP-MIRAI Portal

We provide correct information useful for living and working in Japan and operate a bulletin board to promote interaction in the community.



Number of Registrants  
(As of this issue)

# 3,500

App Download

or search "JP-MIRAI Portal" on web!



22 languages

Consultation Desk for Foreigners

### JP-MIRAI Assist



Any kind of consultation regarding daily life and labor issues are available via chat, email, and phone call. For complex consultations, we provide support through companion support, expert consultation including ADR.

Tel. 0800-123-5717 (Free to call)

Collaboration with Expatriate Community

### JP-MIRAI Supporter

We will commission supporters to foreigners and Japanese who have connections with the ethnic community, and will disseminate information in two-way cooperation.



Community page for Supporters

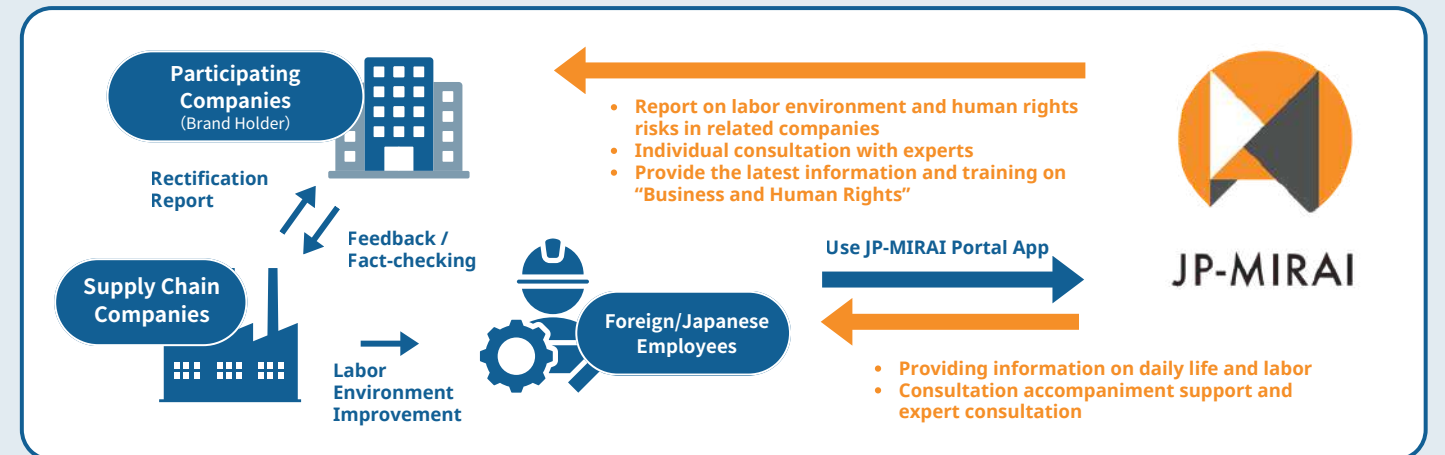
## Collaboration in Business and Human rights With Private Sector

### Corporate Program for Responsible Acceptance of Migrant Workers

for Human Rights Due Diligence, remedy, ethical recruitment and inclusive labor monitoring

Usage results (As of this issue)

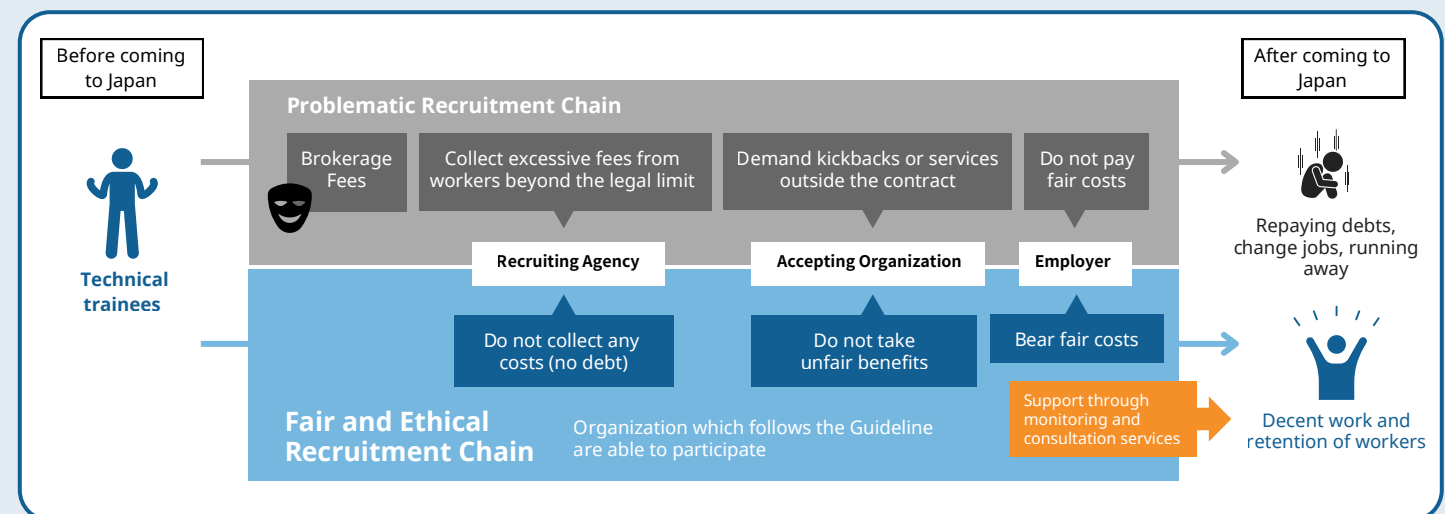
Number of Participating Companies	Number of Related Companies	Number of Beneficiaries (Migrant workers)
24	203	26,200



### FERI Fair and Ethical Recruitment Initiative

- Starts with Vietnam in 2025
- Expanding Asian countries soon

A framework by companies and organizations aiming to realize "International Standard Recruitment of migrant workers" without collecting recruitment and related fees from migrant workers.



### Learning materials for SMEs

- Scheduled to be in operation in Mid-2025

To support SMEs which is difficult to devote sufficient manpower, budget, and time to efforts to protect human rights, we provide videos that explain important codes of conduct based on international norms in an easy-to-understand manner with specific examples.

### Supporting Overseas SCM

We support Japanese companies in managing their overseas supply chains in cooperation with international institutions.

Our main partners

- ISSARA Institute:** International NGO in Thailand that is taking a progressive approach to addressing labor issues in the global supply chain.
- RBA:** The world's largest "Business and Human Rights" network with over 600 companies from a variety of industries
- IOM**